

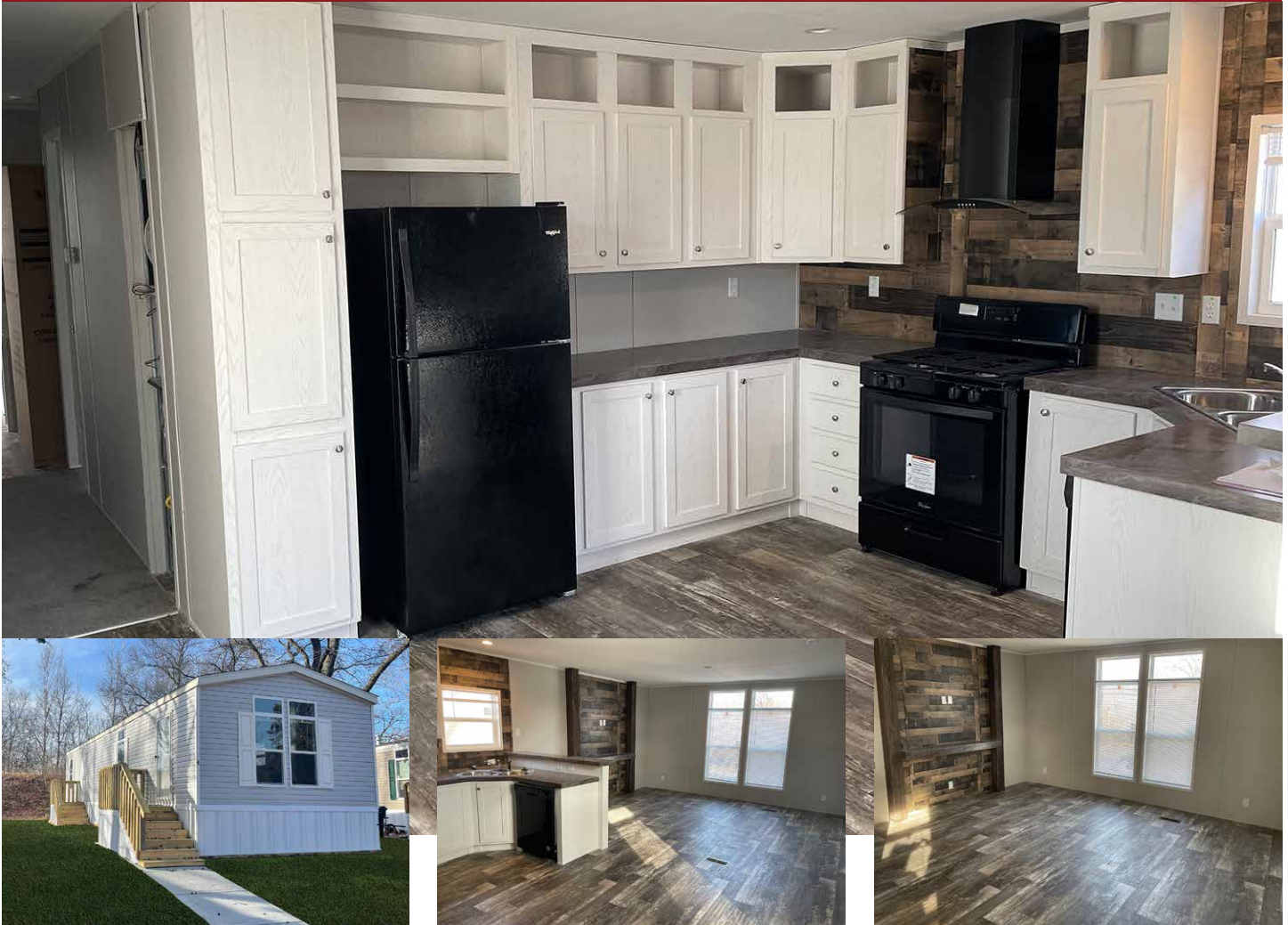


# Quivira Hills Estates

Manufactured Home Community

## Lot 4

800 Sq. Ft., 2 Bedroom, 1 Bath



This home comes with country style kitchen with a Brownwood backdrop and white washed country style cabinets. This home includes an upgraded black appliance package with the glass over the range hood a vent. The home is conveniently located across the street from your mailbox and close to the parks exit.

**Lease for only \$1,079/Mo!\***

**(913) 375-1537**

7265 Forest Drive, Kansas City, KS 66106

[manager@QuiviraHillsMHC.com](mailto:manager@QuiviraHillsMHC.com) | [www.QuiviraHillsMHC.com](http://www.QuiviraHillsMHC.com)

\*Based on approved credit. Restrictions apply. See office for details.

